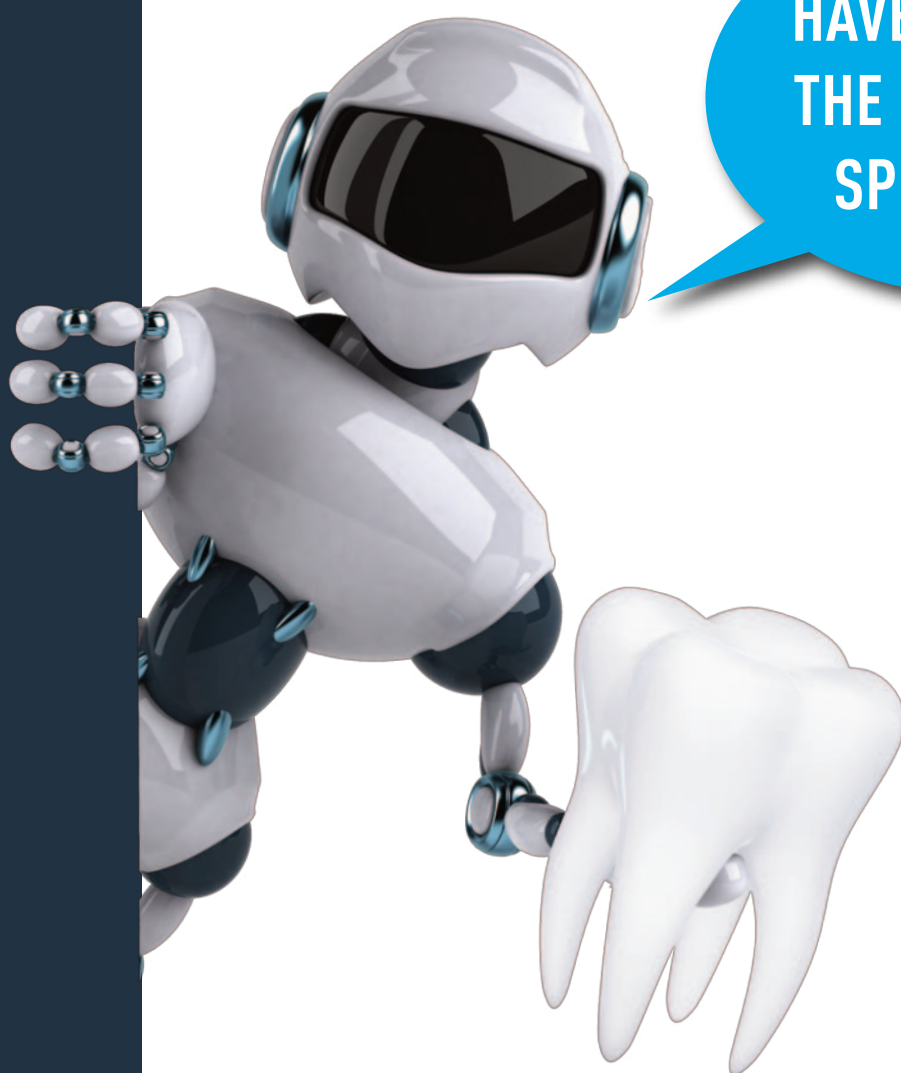


# ANNUAL CONFERENCE

April Friday 16 + Saturday 17, 2021

**ADA C.E.R.P.**® | Continuing Education  
Recognition Program



**ONLINE WORLD**  
**IN-PERSON DENTIST**

## REGISTRATION

All delegates must register online for the conference.

Please log on to [www.dentist.ie](http://www.dentist.ie) to register and click on **Book CPD Events**

	Member	Non Member
FULL CONFERENCE	€295	€590
DENTIST + DENTAL TEAM MEMBER*		
*Access for Team Programme only	€355	N/A
IDA STUDENT MEMBER	€195	
IDA LIFE MEMBER	€195	
ONE DAY	€150	€300

**Members:** If you are unsure of your log-in details, or are encountering problems, please email Aoife on [aofe@irishdentalassoc.ie](mailto:aofe@irishdentalassoc.ie).

### How to log on to the conference on the day

Once you are registered to attend the virtual conference, you will receive, by email, log in details approximately 10 days before the conference. This will allow you access to the conference platform. You are encouraged to log on at this stage to take a look around the virtual platform and ensure that you have no technical difficulties before the conference commences.

Further instructions will be emailed directly to all registrants.

Friday 16 will see **two parallel sessions** running simultaneously. On Saturday 17 there will be **three programmes** to choose from.

Once you are logged onto the platform you can, at anytime, swap between programmes. There will also be another option on both days, the exhibit hall where all the trade stands will be located. We encourage all delegates to visit the exhibit hall during the breaks and at any stage during the Friday or Saturday.

### Dental team

Friday afternoon, Programme 2 is especially designed for all dental team members. All of the afternoon sessions, along with our Illusionist, Jamie Skelton on Friday evening, will be relevant and suitable for all dental team members to attend.

## Welcome to the 2021 IDA Annual Conference: Online World – In Person Dentist

This conference is very unique in that it is our first-ever fully virtual conference. The event will take place over two days, Friday and Saturday, April 16 and 17 next via a dedicated conference management platform.

I am very grateful to this year's Conference Committee, Drs PJ Byrne (Chair), Kieran O'Connor, Aoife Crotty, Helen Walsh and Maurice Fitzgerald who have, under severe time constraints, put together a world-class scientific programme for this event.

We are extremely fortunate to have such speakers as Dr Mauro Fradeani, Dr Lyndon Cooper, Prof. Bob Khanna, Dr Céline Highton, Dr Helen Rodd, Dr Francesa Vailati and Prof. Anton Sculean to contribute to this year's programme. We will have parallel sessions on Friday afternoon, including a comprehensive afternoon of presentations suitable for all dental team members. Saturday will feature three programmes running simultaneously. Delegates can choose to move from programme to programme as they wish. The other fantastic feature of this year's event is that all presentations will be available to all registered delegates to view for five days after the conference, i.e., until April 23.

I am delighted that our online platform will also allow for a full interactive trade show to be present over the two days. Unique conference discounts, competitions and networking will be possible for those in attendance.

On the social side of things, we will have a fun social event on Friday evening and a yoga session first thing on Saturday morning to set us up for the day ahead!

This year's conference will be an event not to be missed. This will be a rare opportunity to see world-class presenters address an Irish audience. Make sure not to miss out! I look forward to seeing you all there.



**Dr Clodagh McAlister**

President Elect

## CONFERENCE COMMITTEE



**PJ Byrne (Chair)**



**Kieran O'Connor**



**Aoife Crotty**



**Helen Walsh**



**Maurice Fitzgerald**

# Friday April 16

## PROGRAMME 1

1.45pm – 2.00pm  
CLODAGH McALISTER

Welcome to our very special conference



2.00pm – 3.00pm

LYNDON COOPER

Single tooth implant aesthetics; a decade of clinical research learning.



3.00pm – 4.00pm

MONIK VASANT

Composite artistry



2.00pm – 3.00pm

LARRY WILLIAMS

Vaping and cannabis, what do you know?



3.00pm – 4.00pm

StJOHN CREAN

Management of medical emergencies in a dental setting

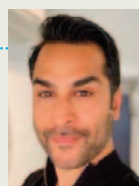
4.00pm – 4.15pm EXPLORE EXHIBITOR STANDS



4.15pm – 5.15pm

HELEN RODD

A reason to smile: new approaches for the management of developmental enamel defects in children



4.15pm – 5.15pm

SHAZ MEMON

Brand identity and building your Instagram



5.15pm – 6.15pm

CÉLINE HIGTON

Fundamentals for success in clinical dentistry



5.15pm – 6.15pm

RAJ RATTAN

Great expectations  
– theory and practice



6.15pm – 6.30pm EXPLORE EXHIBITOR STANDS



6.30pm – 7.30pm

MAURO FRAIDEANI

My newest minimally invasive approach in prosthetic rehabilitation: aesthetic and functional challenges



6.30pm – 7.30pm

JAMES GOOLNIK

Managing and growing a practice in 2021

7.30pm – 8.00pm



An evening with mentalist/illusionist  
JAMIE SKELTON

# Saturday April 17

## PROGRAMME 1

7.00am – 7.45am

DEARBHLA GLYNN

Wake up with yoga



## PROGRAMME 2

7.00am – 7.45am

DEARBHLA GLYNN

Wake up with yoga



7.45am – 8.00am EXPLORE EXHIBITOR STANDS

8.00am – 9.00am

JEANETTE MacLEAN

Non-invasive cosmetic treatments with resin infiltration and bleach



8.00am – 9.00am

AVIJIT BANERJEE

Caries management using the minimum intervention oral healthcare (MIOC) framework



9.00am – 10.00am

CARLOS QUINONEZ

The politics of dental care—why it matters



9.00am – 10.00am

PAUL ABBOTT

Past, present and future of endodontics



10.00am – 10.15am VISIT THE VIRTUAL STANDS

10.15am – 11.15am

THERESA GONZALES

Physical examination of the head and neck for dental healthcare providers



10.15am – 11.15am

SUSAN GUNN

Ethics questioned vs questionable ethics



11.15am – 12.15pm

BOB KHANNA

The face of dentistry today



11.15am – 12.15pm

CHRIS ORR

Beyond smile design: planning the whole mouth for function and aesthetics



12.15pm – 12.30pm EXPLORE EXHIBITOR STANDS

12.30pm – 1.30pm

PAUL ABBOTT

External inflammatory resorption. Overview and management strategies



12.30pm – 1.30pm

CÉLINE HIGTON

Rubber dam isolation – the method behind the madness



1.30pm – 2.30pm

ALLEN WONG

The joy of treating patients with special healthcare needs... what they did not teach you in dental school



1.30pm – 2.30pm

SASCHA HEIN

A new scientific approach to unlock the secrets of shade matching without shade guides





### PROGRAMME 3

7.00am – 7.45am

DEARBHLA GLYNN

Wake up with yoga



8.00am – 9.00am

ANTON SCULEAN

The Bernese concepts for the treatment of single and multiple gingival recessions



9.00am – 10.00am

MIKE GOW

Hypnosis in dentistry



10.15am – 11.15am

SANDRA TAI

Clear aligner technique: success in simplicity



11.15am – 12.15pm

THERESA GONZALES

Emerging trends in the diagnosis and management of chronic orofacial pain



12.30pm – 1.30pm

ANDREW BOLAS

HIQA and oral radiology



1.30pm – 3.00pm

FRANCESCA VAILATI

Additive prosthodontic: why a general practitioner should be interested too.

### Dr Tony Costello Medal



The Costello medal winner from 2019 was Mishaim Mian from UCC Dental School.

The Costello Medal is awarded to a student or students from one of the dental schools each year for a poster demonstration. The competition will take place on Friday of the conference. The competition will be judged on a poster demonstration. The subject matter/topic should be applicable to general practice. The Irish Dental Association will supply a grant for each demonstration.

### EVERY CLOUD HAS A VIRTUAL SILVER LINING

Just when you thought it couldn't get any better...

delegates will have full access to **ALL OF THE PRESENTATIONS** until the following Friday, April 23.



Thank you to our exhibitors for making  
this virtual conference a reality!

Please support them by visiting their 'stands' during the breaks.

align

Colgate

COLTENE  
Upgrade Dentistry

Dental  
Protection | 

Oral-B®

gsk

HENRY SCHEIN®  
DENTAL

  
KBC

 KULZER  
MITSUBI CHEMICALS GROUP

 LPI  
FINANCIAL SERVICES  
YOUR LINK TO A BETTER FUTURE

HENRY SCHEIN®  
MEDICINES

  
MOORE  
WEALTH MANAGEMENT

NSK

SOFTWARE OF  
EXCELLENCE  
A HENRY SCHEIN® COMPANY

TePe®

VOCO

 BRAEMAR  
FINANCE

  
DIAMOND  
DESIGNS

 DOYLE MAHON  
INSURANCES

KARMA  
SALES & SERVICES Ltd

MedAccount  
IRELAND'S SPECIALIST MEDICAL & DENTAL ACCOUNTANTS

BF MULHOLLAND LTD  
Est. 1969  
DENTAL SUPPLIES

 Omega Financial Management

 PARNELL  
PHARMACEUTICALS

 SOUTHERNIMPLANTS®  
Innovative Treatment Solutions



**Prof. Paul Abbott**

Specialist Endodontist and  
Professor of Clinical Dentistry,  
University of Western Australia



**Prof. Avijit Banerjee**

Chair in Cariology and Operative  
Dentistry/Hon. Consultant and  
Clinical Lead, King's College  
London, UK



**Dr Lyndon Cooper**

Associate Dean for Research,  
University of Illinois Chicago  
College of Dentistry

### Past, present and future of endodontics

This lecture will enable participants to:

- ▶ outline the development of the endodontic specialty;
- ▶ understand the evolution of endodontic materials, instruments and devices;
- ▶ evaluate the changes in treatment and outcomes as a result of new materials, instruments and devices; and,
- ▶ describe what approaches should be taken in the future to improve treatment outcomes.

### External inflammatory resorption: overview and management strategies

This lecture will enable participants to:

- ▶ describe external inflammatory resorption and the requirements for it to occur;
- ▶ evaluate the advantages and disadvantages of the relevant intracanal medicaments; and,
- ▶ describe preventive and interceptive management.

### Caries management using the minimum intervention oral healthcare (MIOC) framework

This presentation will outline the team-delivered, patient-focused, four interlinked domains of the minimum intervention oral care (MIOC) framework.

Learning objectives:

- ▶ definitions of practice-based MIOC and its four interlinked domains;
- ▶ primary and secondary caries prevention;
- ▶ tertiary caries prevention – minimally invasive operative intervention for deep lesions; and,
- ▶ an organised approach to the physical examination of the head and neck. You will learn: a systematic approach for taking a history; and, tips for a thorough clinical examination and to improve documentation of your findings.

### Single tooth implant aesthetics: a decade of clinical research learning

This lecture will consider the impact of immediate versus delayed placement, immediate loading, bone morphology and tissue dimensions on the body's responses to anterior maxillary dental implant therapy. Simple rules have emerged that can reduce the aesthetic challenges and risks associated with this treatment. Participants will:

1. Identify key prognostic factors that affect dental implant success.
2. Understand and apply consistent rules that reduce aesthetic risks associated with single tooth implants.
3. Learn how digital technology reinforces these clinical rules to permit biological success that supports aesthetic success.



**Prof. StJohn Crean**

Dean, School of Medicine and  
Dentistry, Professor of Medicine in  
Dentistry, University of Central  
Lancashire



**Dr Mauro Fradeani**

Private practice limited to  
prosthodontics on natural dentition  
and implants, Pesaro, Italy



**Dr Theresa Gonzales**

Executive Director, American College  
of Dentists, and Professor of Oral  
and Maxillofacial Pathology, Medical  
University of South Carolina.

### Management of medical emergencies in a dental setting

The presentation will cover the essentials in managing medical emergencies in the dental practice.

### My newest minimally invasive approach in prosthetic rehabilitation: aesthetic and functional challenges

A new systematic approach based on over 12 years' experience allows the dentist to face highly compromised clinical situations with minimally invasive prosthetic procedures.

Learning objectives:

1. Learn a systematic approach to aesthetic and functional analysis.
2. Learn how to select the most appropriate technique when approaching a full-mouth rehabilitation.
3. Learn innovative operative protocols with minimally invasive prosthetic procedures for a long-lasting aesthetic and functional result.

### Physical examination of the head and neck for dental healthcare providers

This half-day presentation is designed to reacquaint the oral healthcare provider with an organised approach to the physical examination of the head and neck. You will learn: a systematic approach for taking a history; and, tips for a thorough clinical examination and to improve documentation of your findings.

### Emerging trends in the diagnosis and management of chronic orofacial pain

Outcomes from this course will include the ability to: recognise and use validated tools for the measurement of pain and associated symptoms; describe factors that can interfere with or facilitate effective pain management; and, develop and describe the implementation of an evidence-based pain management strategy.



**Dr James Goolnik**

General dentist practitioner,  
Bow Lane Dental, London

#### Practice management secrets

This lively presentation will cover how to run a successful dental practice while having a life. There will be ways to engage both your team and your patients while enriching your community. You will come away with an action plan of how you can invigorate you and your business.

Upon completion of this lecture the attendee should be able to:

- ▶ set business objectives;
- ▶ attract the right patients and then keep them!;
- ▶ control business costs and learn how to price your services; and,
- ▶ empower your team.



**Mike Gow**

General private dentist and  
director of dental anxiety  
management at The Berkeley  
Clinic.

#### An introduction to dental hypnosis

Hypnosis was scientifically recognised in its modern sense in 1841. 180 years on and despite the evidence based research, it is often still surrounded by misunderstanding and scepticism by the medical and dental professions. In this presentation Mike will dispel the myths using the science! He will clearly explain exactly what hypnosis is, in what ways it can be integrated as an effective tool in dental practice and outline how you can learn more about this fascinating topic.

By the end of this session delegates will be able to:

- 1 Understand what is meant by the terms 'hypnosis', 'trance' and 'hypnotic suggestion'.
- 2 List the uses of hypnosis in dentistry.
- 3 Understand what is meant by the terms 'hypnotic induction', 'deepening', 'ego strengthening', 'anchoring', 'post hypnotic suggestion', and 'self hypnosis'.



**Susan Gunn**

CFE, Susan Gunn Solutions

#### Ethics questioned vs questionable ethics

Yes, there is a difference between the two.

The norm used to be: "If you don't have anything nice to say, say nothing at all". With those sentiments seemingly thrown out the window, how easy is it to "do the right thing?"

The definition of the "right thing" depends on the individual. Knowing that who we are as a person affects everything we do, what then goes into the thought process to develop a personal ethical foundation?

Learning objectives:

1. Ethics definition explored.
2. How ethics are developed.
3. How our ethics affect others.



**Sascha Hein**

Managing Director, Emulation  
Research and Development,  
Germany

#### A new scientific approach to unlock the secrets of shade matching without shade guides

Reliable shade matching of indirect restorations with natural dentition remains a formidable challenge. With the eLAB system it is now possible to use a DSLR camera or a smartphone paired with a suitable illumination device to quantify and communicate tooth shade objectively.

Key learning goals:

1. The pros and cons of visual shade assessment.
2. Understanding light propagation through dental hard tissues (biophotonics).
3. Replacing shade guides with one colour appearance model.
4. Acquiring target shades with a DSLR camera or smartphone.
5. The eLAB digital workflow.



**Dr Céline Higton**

Private general dentist with a  
focus on aesthetics

#### Fundamentals for success in clinical dentistry

Learning objectives:

- ▶ the importance of a methodical approach to clinical dentistry;
- ▶ how dental photography is a key part of dental cases;
- ▶ the multiple benefits of the rubber dam; and,
- ▶ the importance of providing a stable and consistent working environment within the oral cavity.

#### Rubber dam isolation – the method behind the madness

Learning objectives:

- ▶ the importance of material and equipment choice;
- ▶ why clamp choice and shape is so important;
- ▶ multiple rubber dam application techniques;
- ▶ the difference between stabilising and retracting the dam.



**Prof. Bob Khanna**

Professor of Facial Aesthetics,  
University of Seville, Clinical  
Director, DrBK Clinic, Reading and  
Harley Street, Clinical Director, the  
Dr Bob Khanna Training Institute

#### The face of dentistry today

This presentation will look at the progression of over two decades of facial aesthetics, and will show delegates how to confidently incorporate facial aesthetics procedures as a very healthy adjunct to daily practice. Including the use of BTX, fillers, PRP and threadlifting, this lecture will demystify a lot of the commonly held views via clinical excellence, through safe and predictable practice. This presentation will suit any progressive clinician at all levels of experience with lots of tips and tricks, helping them to succeed.

Dentistry has evolved over the years, and with the latest facial aesthetic treatments, we now have an excellent range of tools available to us to offer the very best treatments to our patients, providing a true win-win scenario.





**Dr Jeanette MacLean**

Pediatric dentist, Affiliated  
Children's Dental Specialists,  
Arizona, USA

### Non-invasive cosmetic treatments with resin infiltration and bleach

Unightly congenital enamel defects and acquired white spot lesions can be troublesome for patients. This course will review two simple and painless management options: icon resin infiltration and etch bleach seal can improve or even completely reverse the appearance of congenital enamel defects and white spot lesions while preserving tooth structure and repairing the patient's natural enamel.

Learning objectives:

- ▶ describe the evidence for using icon resin infiltration and etch bleach seal;
- ▶ describe case selection, materials, and clinical protocol for each procedure; and,
- ▶ review the pros and cons for each technique.



**Shaz Memon**

Digital marketing expert

### Brand identity and building your Instagram

Learning objectives:

- ▶ understanding brand identity – personal and practice;
- ▶ the type of Instagram account you should have;
- ▶ how to be interesting;
- ▶ identifying your own voice;
- ▶ attracting new patients;
- ▶ growing your followers authentically;
- ▶ defining the type of patients you want;
- ▶ using Instagram stories; and,
- ▶ using IGTV.



**Dr Chris Orr**

Cosmetic and restorative  
dentist, UK

### Beyond smile design: planning the whole mouth for function and aesthetics

This presentation will discuss a structured approach to aesthetic treatment planning, which first allows the clinician to envisage the ideal aesthetics, and then combine needed treatment with the elective treatment required to idealise aesthetics, before considering the effect that the whole treatment plan will have on the patient's function. Participants will gain the following:

1. A structured approach to comprehensive aesthetic treatment planning, from smile design through tooth-by-tooth management to occlusal management.
2. Knowledge of simple risk management examination tools that can be applied at the chairside.
3. Knowledge of a structured approach to treatment delivery.



**Dr Carlos Quinonez**

Associate Professor and Program  
Director Dental Public Health,  
Faculty of Dentistry, University of  
Toronto

### The politics of dental care – why it matters

This presentation reviews the politics of dental care, using Canada and the recent Covid-19 pandemic as examples. The presentation will demonstrate how, more than ever, special focus must be placed on the politics of dental care in order to safeguard the health of dentistry now and into the future. At the end of this presentation, attendees will be able to:

1. Describe the major policy framework that dentistry has been functioning under.
2. Summarise the limitations of this policy framework for current and future decision-making.
3. Articulate what new directions dentistry might take in order to safeguard its future.



**Dr Raj Rattan**

Director, Dento-legal Consultant,  
Dental Protection

### Great expectations – theory and practice

Meeting increasing patient expectations is one of the great challenges in the business of dentistry. It impacts on patient satisfaction, business growth and potential dento-legal consequences. This session will review the current approach to managing patient expectations and discuss the psychology and science of patient behaviours, outlining practical hints and tips on how to apply the findings in everyday practice.

Learning objectives:

- ▶ apply the key principles of managing patient expectations;
- ▶ gain a better understanding of the psychology that drives patient complaints; and,
- ▶ practise in a way that limits dento-legal threats in everyday practice.



**Prof. Helen Rodd**

School of Clinical Dentistry,  
University of Sheffield, UK

### A reason to smile: new approaches for the management of developmental enamel defects in children

Developmental enamel defects present considerable diagnostic and treatment challenges. This presentation will first provide a brief overview of the epidemiology, aetiology and impact of enamel defects. The second half will consider the range of treatment options for improving the aesthetics of permanent incisors affected by visible enamel defects in young children. Following this lecture, participants will have knowledge of:

- ▶ prevalence and presentation;
- ▶ aetiology and diagnosis;
- ▶ psychosocial impacts in young patients; and
- ▶ non-invasive aesthetic management of incisor enamel opacities.



**Prof. Anton Sculean**

Professor and Chairman,  
Department of Periodontology,  
Executive Director of the School of  
Dental Medicine, University of  
Bern, Switzerland



**Dr Sandra Tai**

Specialist in Orthodontics Clinical  
Assistant Professor Graduate  
Orthodontics Faculty of Dentistry  
University of British Columbia,  
Vancouver, Canada



**Dr Francesca Vailati**

Prosthodontist, Geneva

### The Bernese concepts for the treatment of single and multiple gingival recessions

Predictable coverage of single and multiple adjacent recessions is still a challenge for the clinician. A number of factors may limit the management of soft tissues and consequently impair outcomes. Emerging evidence indicates that the modified coronally advanced tunnel (MCAT), the laterally closed tunnel (LCT) or the combination of both in conjunction with certain tissue grafts may result in predictable outcomes and long-term stability.

The aims of the presentation are:

- ▶ to provide the biologic rationale and treatment philosophy for the use of MCAT and LCT for soft tissue reconstruction in various clinical scenarios; and,
- ▶ using clinical cases and surgical videos, to illustrate the step-by-step procedure for the MCAT and LCT.

### Clear aligner technique: success in simplicity

In this presentation Dr Sandra Tai will discuss the scope of practice of clear aligners for the general practitioner, case selection and simple treatments to facilitate optimal restorative outcomes. This will include tooth movements in preparation for veneers and preparation of the single tooth implant site.

### Additive prosthodontics: why a general practitioner should be interested too

In a profession where competition is very high, additive dentistry is the answer. For restorations of the anterior teeth, for example, in addition to crowns and elective endodontic therapy, an additive dentist can propose palatal veneers, tacsos, step veneers, or double veneers to satisfy the patient's request for less invasive therapy. Following the three-step protocol, patients can be stabilised occlusally before irreversible procedures. This affords practitioners the luxury to make a mistake and go back to the initial status if the patient is not happy. In this presentation you will see that a new way of doing dentistry is possible, based on earlier interception, higher patient satisfaction and easier solutions for failures.



**Dr Monik Vasant**

Aesthetic Dental Surgeon,  
London



**Dr Larry Williams**

Associate Professor, Midwestern  
University, College of Dental  
Medicine-Illinois



**Dr Allen Wong**

Professor, Department of  
Diagnostic Sciences, Pacific Arthur  
A. Dugoni School of Dentistry,  
San Francisco, USA

### Composite artistry

Monik will give an overview into the endless possibilities of modern day composites in anterior situations

Aims:

- ▶ to understand the endless possibilities of modern-day anterior composites;
- ▶ to introduce the thought process and factors involved in planning composite cases;
- ▶ to discuss specific clinical scenarios; and,
- ▶ to discuss clinical tip and tricks.

### Vaping and cannabis: what do you know?

In this presentation, attendees will learn how to discuss vaping with their patients, how to better understand the risks of cannabis as it pertains to the oral cavity, and explore education resources regarding vaping and cannabis use.

Objectives:

1. Discuss the healthcare team's role in addressing cannabis use.
2. Discuss the health risks of marijuana.
3. Explore educational resources.

### The joy of treating patients with special healthcare needs ... what they did not teach you in dental school

Learning objectives:

- ▶ defining the special healthcare needs population and understanding some of the barriers and disparities of care;
- ▶ minimally invasive dentistry with maximum benefit for patients with special healthcare needs;
- ▶ developing a team for a win/win outcome with some strategies; and,
- ▶ lessons learned from the pandemic with respect to special healthcare needs populations in the United States.